



Break new ground in extraction and processing, improve operations, and turn waste into consumer products.

## RESEARCH FOCUS AREAS

- Geophysical sensing techniques
- Mineral & chemical characterization
- Mineral processing, geometallurgy & extractive metallurgy
- Rock strength, fracturing & excavation
- Sustainability & development
- Technology & automation

## ONE-OF-A-KIND RESOURCES

- Geotechnical Center of Excellence: multidisciplinary risk mitigation
- Hyperspectral Mine Consortium: ultramodern data collection
- Mine Automation and Autonomous Systems Lab: advanced autonomous lab systems
- San Xavier Underground Mining Lab: industry-level training

## DEGREES

PhD • MS • ME *(online option)*

### CERTIFICATES WITH ONLINE OPTIONS

- Mine Production & Information Technology
- Mineral Processing & Extractive Metallurgy
- Mining Occupational Safety & Health
- Rock Mechanics

## ARIZONA

# No. 1

U.S. copper production  
(USGS)



“ Participating in the master’s program at the mining department has been an incredible experience. It has opened up new avenues for my career and connected me with a network of peers and mentors who are equally passionate about making a difference in our field. ”

- Pedro Lopez, MS student



## FUNDING OPTIONS THROUGHOUT DEGREE LIFECYCLE

### APPLICATION DEADLINES

Fall – All Programs

Domestic: July 15 | International: April 30

Funding Consideration, All Students: Jan. 15

Spring – ME and Certificates Only

Domestic: November 18

International online: Nov. 18,

International on campus w/Visa: Sept. 30

## CONTACTS

Kray Luxbacher

Department Head

kraylux@arizona.edu

520.621.6686

Thelma Magallanes

Academic Advisor

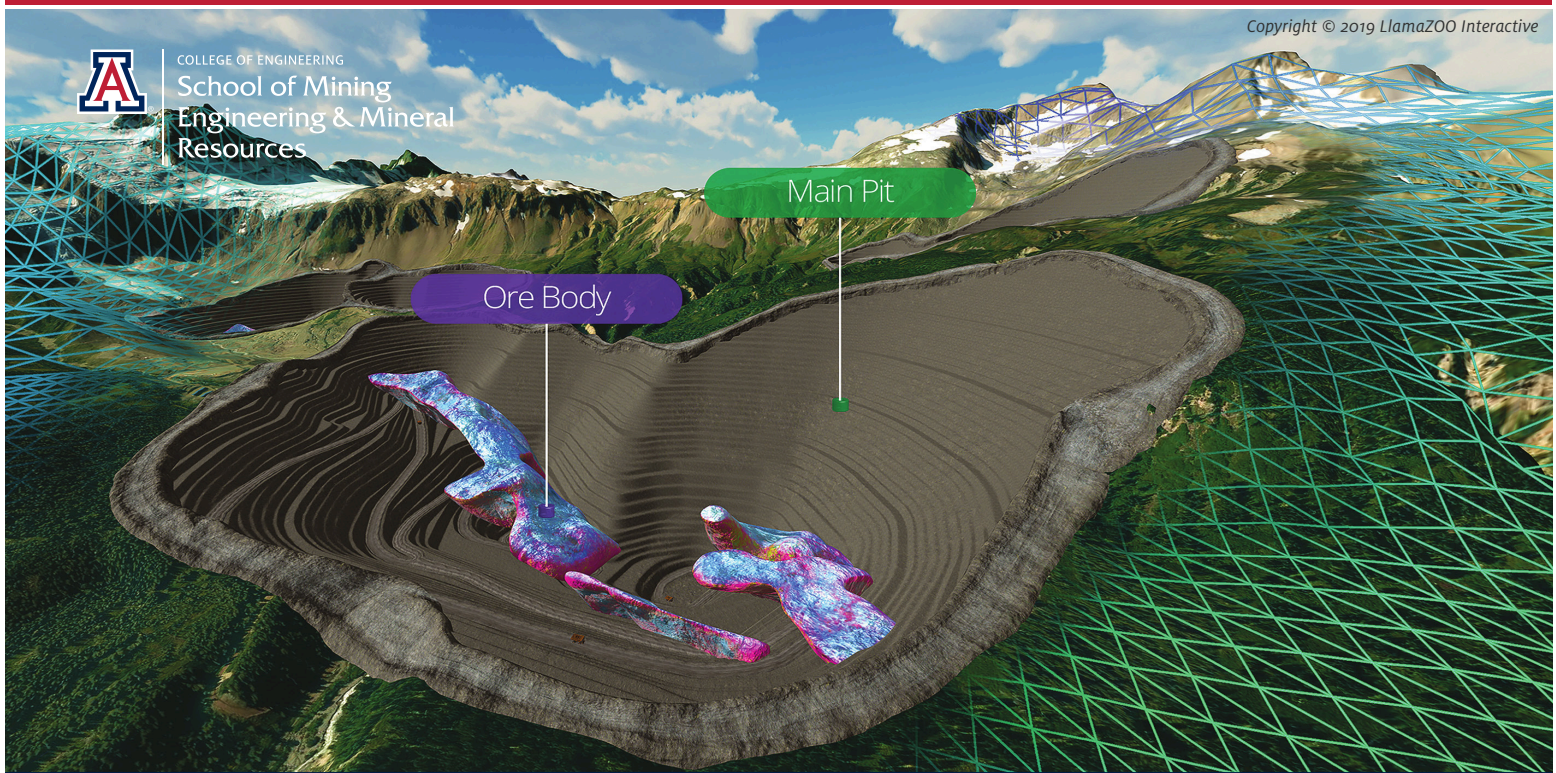
tgabbs18@arizona.edu

520.621.6063





COLLEGE OF ENGINEERING  
School of Mining  
Engineering & Mineral  
Resources



“Between having their own student run mine and strong industry connections, the MGE program at the U of A provided me with the exact right experience in and out of the classroom to exceed in my professional career”

- Brody Rastall, ME graduate, Staff Engineer, WSP



## FACULTY EXPERTISE

**Angelina Anani** – [angelinaanani@arizona.edu](mailto:angelinaanani@arizona.edu)

system modeling and optimization • planning and production scheduling • sustainable mining systems • equipment reliability studies • tunneling and underground works • energy and water efficiency • ethnographic research • machine learning • 3D planning • supply chain

**Isabel Barton** – [fay1@arizona.edu](mailto:fay1@arizona.edu)

geomaterials • materials characterization • economic geology • geochemistry • extractive metallurgy • mineralogy

**Bo Hyun Kim** – [bohyunkim@arizona.edu](mailto:bohyunkim@arizona.edu)

rock mechanics • ground control engineering • underground excavation stability • numerical modeling • stress redistribution and confinement loss • pillar and roof failure mechanisms • dynamic loading and rockburst mechanics • forensic geomechanics • mine-scale geomechanical design • coupled field-numerical validation

**SamuelOLON** – [ndlovus@arizona.edu](mailto:ndlovus@arizona.edu)

underground mine planning • mine ventilation • mine health and safety • safety-based design • feasibility studies • mining project management

**Kray Luxbacher** – [kraylux@arizona.edu](mailto:kraylux@arizona.edu)

ventilation • atmospheric monitoring • risk assessment and management • fire simulation sensing and characterization

**Moe Momayez** – [moe.momayez@arizona.edu](mailto:moe.momayez@arizona.edu)

geomechanics • ground control • slope stability monitoring • geosensing • big data • machine learning • health and safety • ventilation • nondestructive testing • renewable energy

**Selo Ndlovu** – [ndlovus@arizona.edu](mailto:ndlovus@arizona.edu)

hydrometallurgy • bioleaching • extractive metallurgy • mineral processing • recycling

**Dean Riley** – [deanriley1@arizona.edu](mailto:deanriley1@arizona.edu)

mapping acid mine drainage • hyperspectral imaging and advanced sensors • geomaterials • mineral exploration • mine tailings

**Nathalie Risso** – [nrisso@arizona.edu](mailto:nrisso@arizona.edu)

mine automation and operations • renewable energy and sustainability • machine learning • cyber-physical systems • process optimization • data mining

**Victor Tenorio** – [vtenorio@arizona.edu](mailto:vtenorio@arizona.edu)

underground mine design • mine examination and valuation • underground mine design • digital mining • moon mining • smart mining technologies • decision support systems

**Muhammad Waqas** – [waqas@arizona.edu](mailto:waqas@arizona.edu)

discrete element modeling • artificial intelligence modeling • mining equipment operations • geomechanics

**Edward Wellman** – [ecwellman@arizona.edu](mailto:ecwellman@arizona.edu)

rock mechanics • engineering geology • geotechnical monitoring • tunneling and underground construction • tailings design and construction • mine reclamation

**Jinhong Zhang** – [jhzhang@arizona.edu](mailto:jhzhang@arizona.edu)

mineral processing • froth flotation • surface chemistry • water treatment • atomic force microscopy